



**Southwest FL Oyster Working Group Subcommittee**  
**Monday March 30, 2015 from 9:00 am to 11:00 am**  
**Laishley Park Community Room, 120 Laishley Ct, Punta Gorda, FL**

**Please Note:** Remote Access will be provided for this meeting through Go-To-Meeting, but the details will be provided in separate email.

**Meeting Purpose:** To review the Water Atlas Enhancements Project draft deliverables prior to the TAC April 9, 2015 meeting for:

- Task 2: Time Series Analysis of Water Quality Variables &
- Task 3: Interactive Program Page for Water Clarity Reporting Tool.

**Agenda**

1. Welcome, Introductions & Meeting Purpose – Judy Ott, CHNEP
2. Presentation of Time Series Analysis of Water Quality Variables – Shawn Landry & Jason Scolaro, USF
3. Discussion of Time Series Analysis of Water Quality Variables – Subcommittee Participants
4. Presentation of Interactive Water Clarity Reporting Tool – Shawn Landry & Jason Scolaro, USF
5. Discussion of Interactive Water Clarity Reporting Tool – Subcommittee Participants
6. Summary of Subcommittee Discussions & Recommendations for TAC – Judy Ott, CHNEP
7. Adjourn – Judy Ott, CHNEP

**THIS MEETING IS OPEN TO THE PUBLIC**

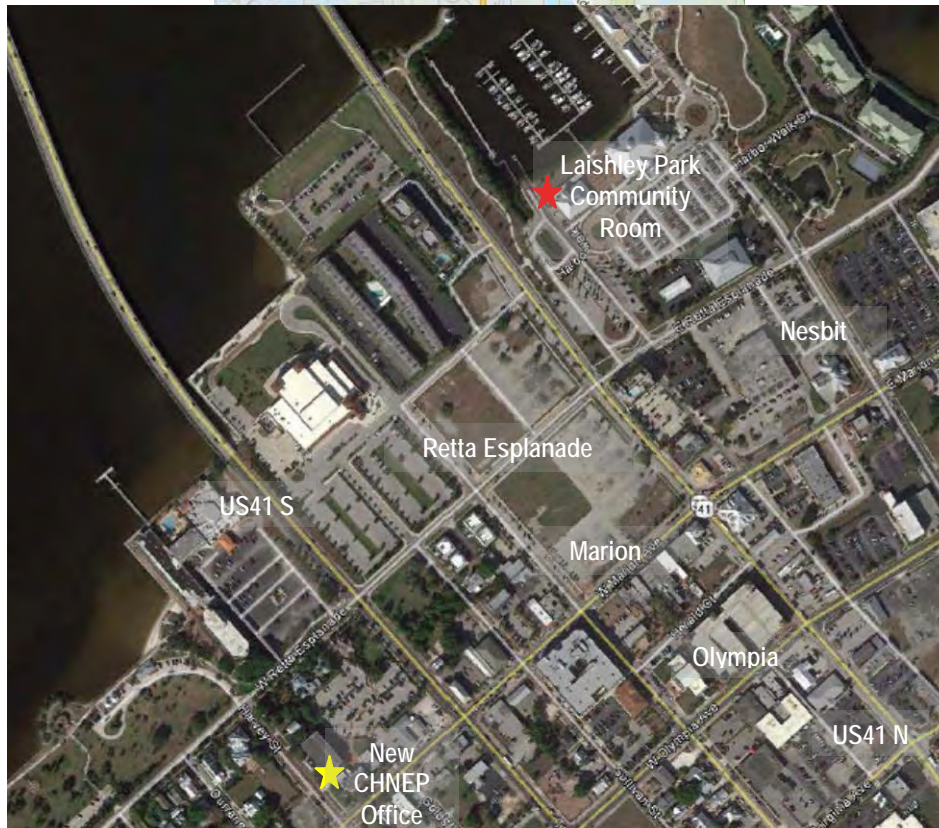
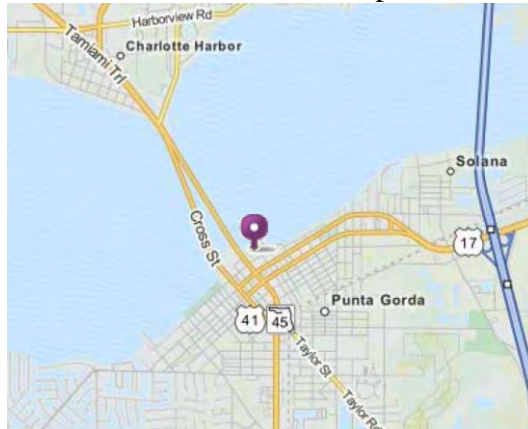
Two or more members of the Everglades West & Caloosahatchee Basin Working Groups, Peace River Basin Management Advisory Committee, Peace River Basin Management Working Group, or Southwest Florida Regional Planning Council may be in attendance, & may discuss matters that could come before the respective body.



**Southwest FL Oyster Working Group Subcommittee  
Monday March 30, 2015 from 9:00 am to 11:00 am  
Lashley Park Community Room, 120 Lashley Ct, Punta Gorda, FL**

**DIRECTIONS TO LAISHLEY PARK COMMUNITY ROOM**

**Simplified directions:** For more detailed directions, please consult a mapping program.



**From the North & South via I-75:**

- Take I-75 to Exit 164/SR17/Punta Gorda & turn west on SR 17 towards Punta Gorda.
- Take SR17/Duncan Rd. west about 2 miles (it turns into Marion Ave.) to Nesbit St. & turn right (north) on Nesbit St.
- Take Nesbit St. north 2 blocks & turn left (west) on Lashley Ct. The Community Room is in the 2<sup>nd</sup> building on right.

**From the North via US-41:**

- Take US-41 south to downtown Punta Gorda to Retta Esplanade & turn left (east) on Retta Esplanade.
- Take Retta Esplanade. east 3 blocks to Nesbit St. & turn left (north) on Nesbit St.
- Take Nesbit St. north 1 block & turn left (west) on Lashley Ct. The Community Room is in the 2<sup>nd</sup> building on right.

**From the South via US-41:**

- Take US-41 north to downtown Punta Gorda to Retta Esplanade & turn right (east) on Retta Esplanade.
- Take Virginia Ave. west 2 blocks to Sullivan St. & turn north (right) on Sullivan St.
- Take Nesbit St. north 1 block & turn left (west) on Lashley Ct. The Community Room is in the 2<sup>nd</sup> building on right.