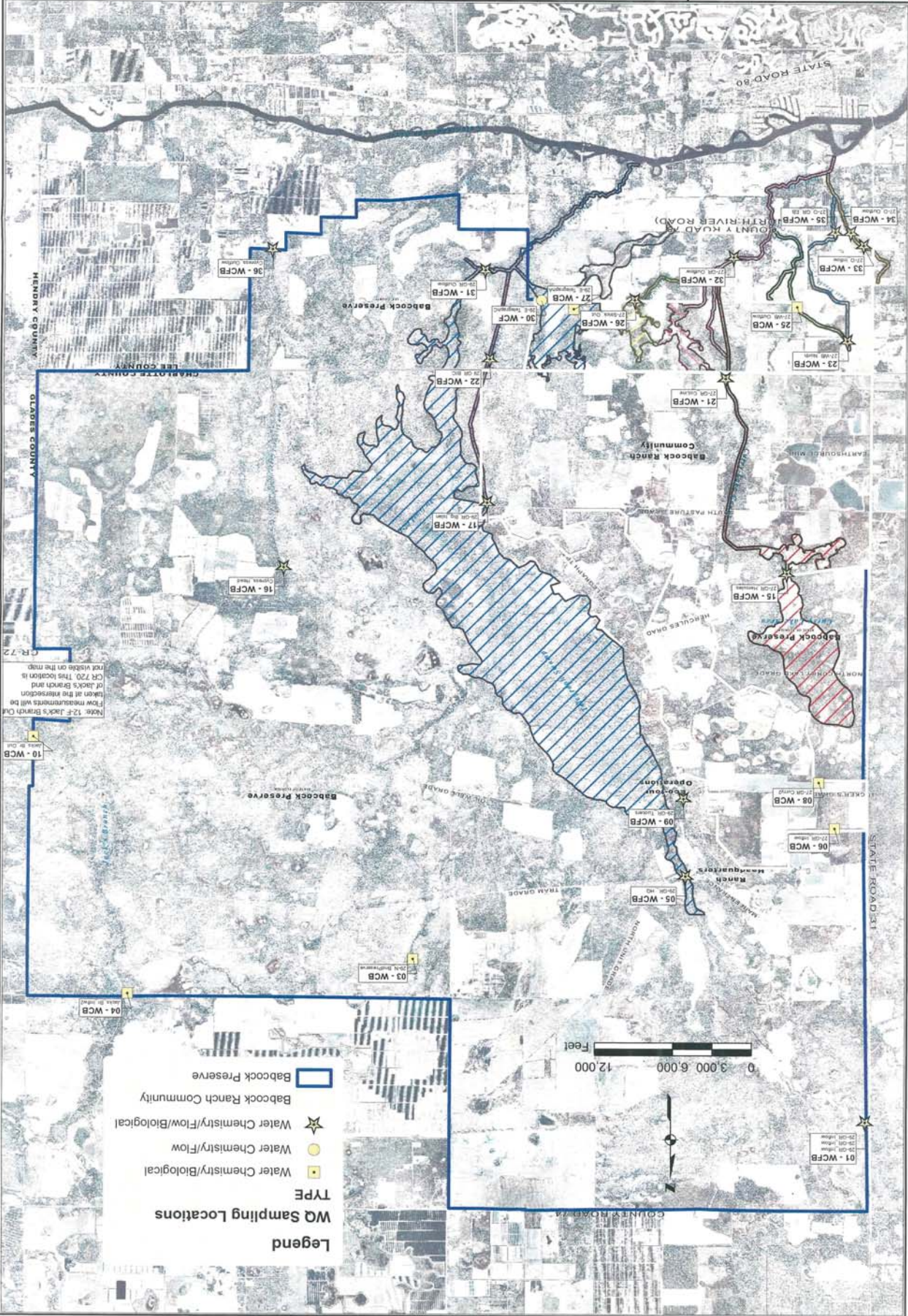


FIGURES



DATE	PROJECT NO.	FILE NO.	SCALE	AS SHOWN	SHEET NO.



F:\map1\Proj-1\20077180\ArcGIS\WQSampling Locations 8x11.mxd

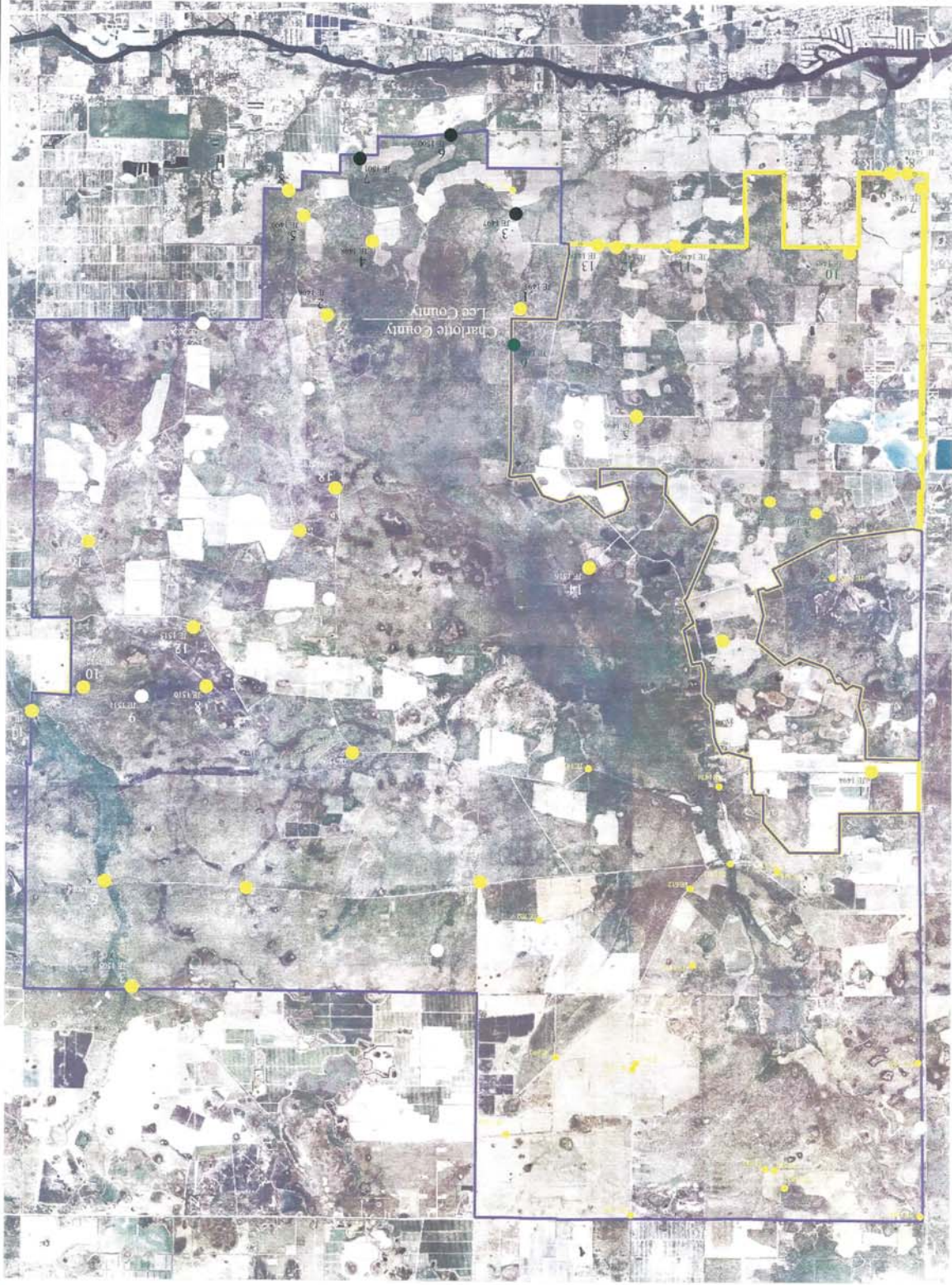
DATE	9/23/08
PROJECT NO.	20077180
FILE NO.	00-00-00
SCALE	As Shown
SHEET	1 OF 1

Babcock Ranch Installed
Piezometers as of 9/23/08

2122 JOHNSON STREET
FORT MYERS, FLORIDA 33902-1550
P.O. BOX 1550
PHONE (239) 334-0046
FAX (239) 334-3661
E.B. #642 & L.B. #642

JOHNSON
ENGINEERING

- NOTES:
1. Yellow smaller solid dots represent 20 existing Ag Wells constructed previously.
 2. Larger solid yellow circles indicate Piezometers constructed out of latest group of 44 proposed piezometers (23 BRM + 8 BRM Lcc + 13 BPH). 30 Total
 3. Remaining piezometers to construct 10 BRM + 3 BRM Lcc + 1 BPH = 14 Total
 4. Proposed locations 15 and 19 have been relocated to be outside of farm field detention areas.
 5. Area 6 Piezometers installed prior to 2008 shown as small black symbols.



N:\20077180\Piezometers as of 9-23-08.dwg (11x17) mfd Sep 24, 2008 - 1:51 pm

Babcock Ranch
Lee and Charlotte County, Florida

JOHNSON
ENGINEERING

2126 JOHNSON STREET
FORT MYERS, FLORIDA 33907-1500
TEL: (888) 334-2661
FAX: (239) 334-2661
E-MAIL: JEH@J.E.A. L.L. #642

Piezometer Well Location Map
Installed as of 03/13/06

DATE	01/28/06
PROJECT NO.	20050883-303
FILE NO.	00-00-00
SCALE	AS SHOWN
SHEET	1 OF 1

