

CHARLOTTE HARBOR

CHARLOTTE COUNTY

LEE COUNTY

PROJECT LOCATION

LEGEND

Hudson Creek



NOTES:

AERIAL PHOTOGRAPHS WERE ACQUIRED FROM THE USGS-FSA AERIAL PHOTOGRAPHY FIELD OFFICE AND WERE F-OWN IN THE YEAR 2017

COUNTY INFORMATION AND ROADWAY NETWORKS WERE ACQUIRED FROM THE FLORIDA GEOGRAPHIC DATA LIBRARY WEBSITE

DRAFT

ALL INFORMATION CONTAINED HEREIN IS THE PROPERTY OF PASSARELLA & ASSOCIATES, INC. AND IS TO BE USED ONLY FOR THE PROJECT AND DATE SPECIFIED HEREON.

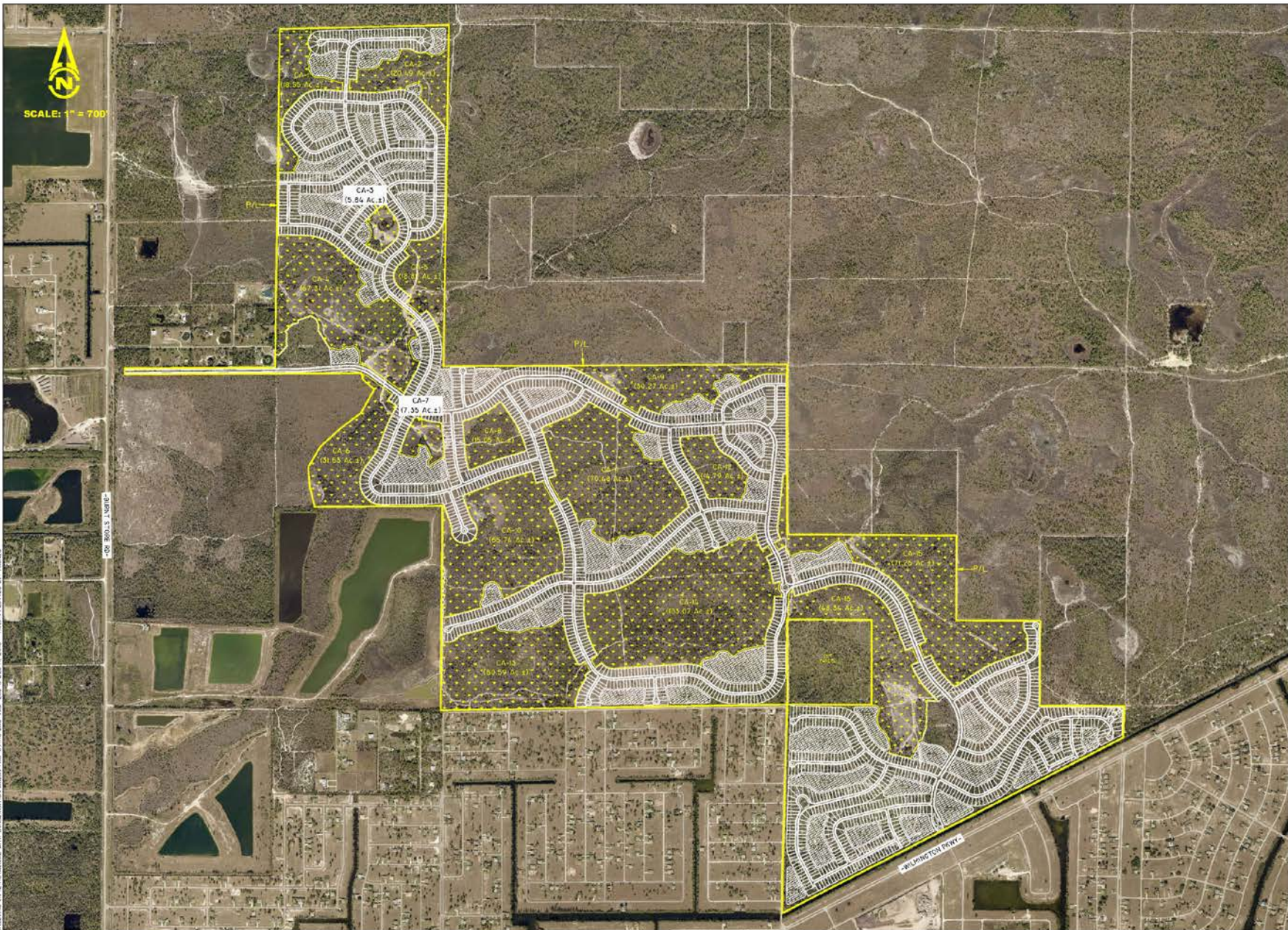
REVISIONS	DATE	DRAWN BY	DATE
		T.S.	12/11/18
		DESIGNED BY	DATE
		L.E.	12/11/18
		REVIEWED BY	DATE
		L.E.	12/11/18

13620 Metropolis Avenue
 Suite 200
 Fort Myers, Florida 33912
 Phone (239) 274-0067
 Fax (239) 274-0069




HUDSON CREEK
 REGIONAL AERIAL WITH BOUNDARY

DRAWING No.	16PDG2556
SHEET No.	



AERIAL PHOTOGRAPH ACQUIRED THROUGH THE LEE COUNTY PROPERTY APPRAISER'S OFFICE WITH A FLIGHT DATE OF JANUARY 2018. SITE PLAN PER BARRACO AND ASSOCIATES, INC. DRAWING No. 25478E00.DWG DATED SEPTEMBER 11, 2018.

LEGEND:
 CONSERVATION AREA
 (649.48 Ac.±)

CONSERVATION AREA NO.	ACREAGE
1	18.55 Ac.±
2	20.49 Ac.±
3	5.84 Ac.±
4	07.31 Ac.±
5	18.82 Ac.±
6	31.53 Ac.±
7	7.35 Ac.±
8	15.05 Ac.±
9	30.27 Ac.±
10	65.74 Ac.±
11	70.48 Ac.±
12	14.79 Ac.±
13	60.59 Ac.±
14	103.07 Ac.±
15	71.26 Ac.±
16	48.34 Ac.±
TOTAL	649.48 Ac.±

NOTES:
 AERIAL PHOTOGRAPHS WERE ACQUIRED THROUGH THE LEE COUNTY PROPERTY APPRAISER'S OFFICE WITH A FLIGHT DATE OF JANUARY 2018.
 SITE PLAN PER BARRACO AND ASSOCIATES, INC. DRAWING No. 25478E00.DWG DATED SEPTEMBER 11, 2018.

DRAFT

REVISIONS	DATE	DRAWN BY	DATE
T.S. - Revised boundary	9/11/18	T.S., D.B.	5/21/18
		DESIGNED BY L.E.	5/21/18
		DRAWN BY L.E.	5/21/18

13620 Metropolis Avenue
 Suite 200
 Fort Myers, Florida 33912
 Phone (239) 274-0067
 Fax (239) 274-0069



HUDSON CREEK
 AERIAL WITH SFWMD CONSERVATION AREAS MAP

DRAWING No. 16PDG2556
SHEET No.