

Habitat Conservation Subcommittee Workshop Update:

Place Based Recreational Fishery Conservation in Charlotte Harbor



Nicole Iadevaia
Coastal & Heartland National Estuary Partnership

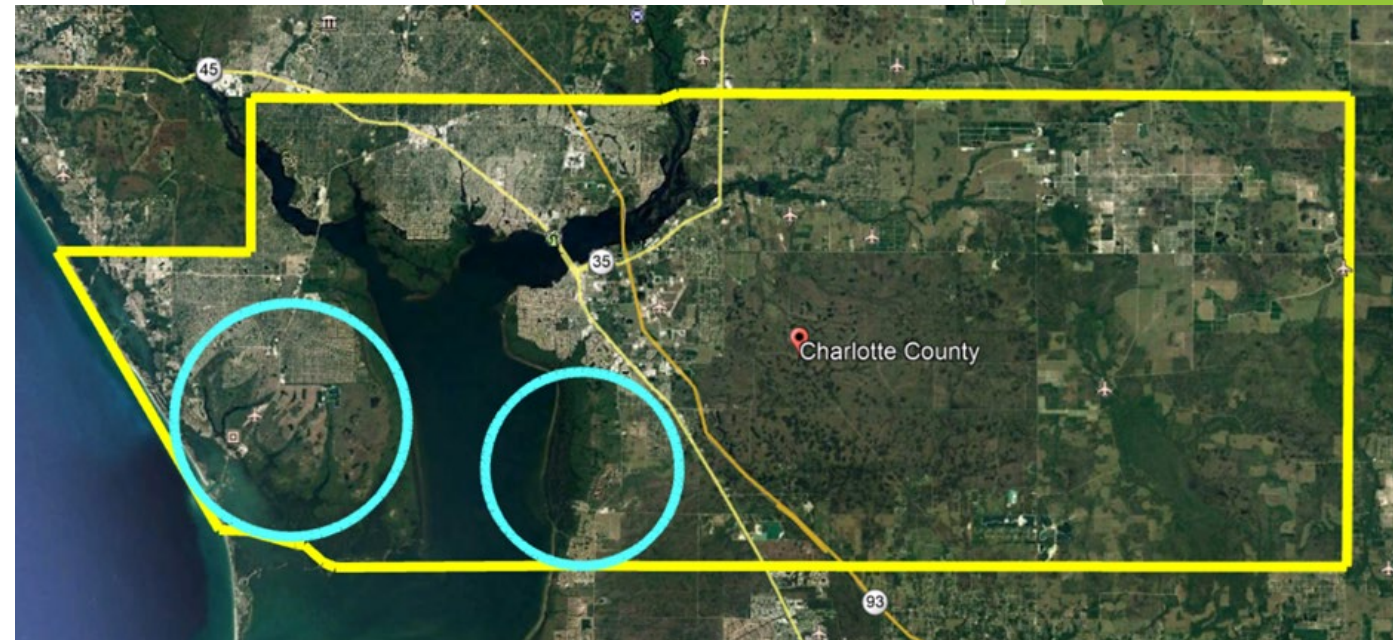
Corey Anderson
Florida Fish and Wildlife Conservation Commission



Project Purpose

Extend CHNEP's Habitat Restoration Needs (HRN) Plan into place-based, topic-focused conservation plans and actions

- ▶ **Leverage new fisheries research to inform resource management**
 - ▶ Focus on limited resource: discrete Charlotte County sport fish nursery habitats
- ▶ **Address CCMP Objectives:** Hydrology 3; Fish, Wildlife, & Habitat 1, 2
- ▶ **The Habitat Conservation Subcommittee (HCS) guides the “co-production” process**
 - ▶ Identify management uncertainties, research needs, & conservation opportunities
 - ▶ Plan for applying information gained to policies & actions



Importance of Sportfish Habitat



Charlotte County Economic Impact:
\$1.49 billion (annually)
Primary economic driver: TOURISM
Quality of Life: Priceless

NATURAL RESOURCES IN THE CHNEP AREA GENERATE:



\$13.6 Billion in Total Output



\$3.8 Billion in Regional Income



\$146 Million in Local & Tax Revenue

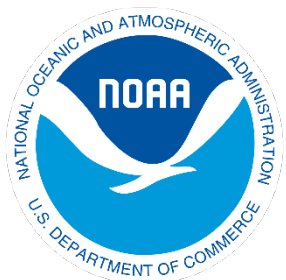


**and Support Over 148,000 Jobs
Annually**

HCS project funded through a RESTORE grant to FWFF

- ▶ Define habitat management issues & research needs
 - ▶ Locate nurseries, understand hydrology function, project effects of development
- ▶ “Co-production” of solutions
 - ▶ Efficient market-based conservation policies, easements, etc.
 - ▶ Zoning, density, stormwater management, strategic preservation, habitat restoration planning
- ▶ Goal to inform 2027 Comp planning, state management

NOAA RESTORE Science Program award NA21NOS4510190



HCS project progress

- ▶ Team hired to facilitate workshops & write plans



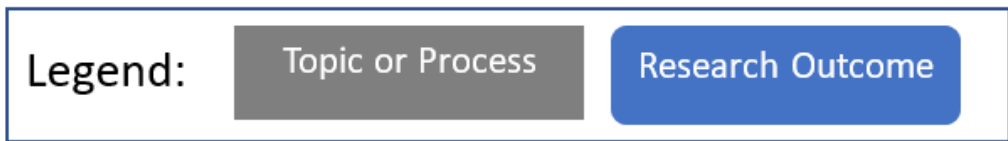
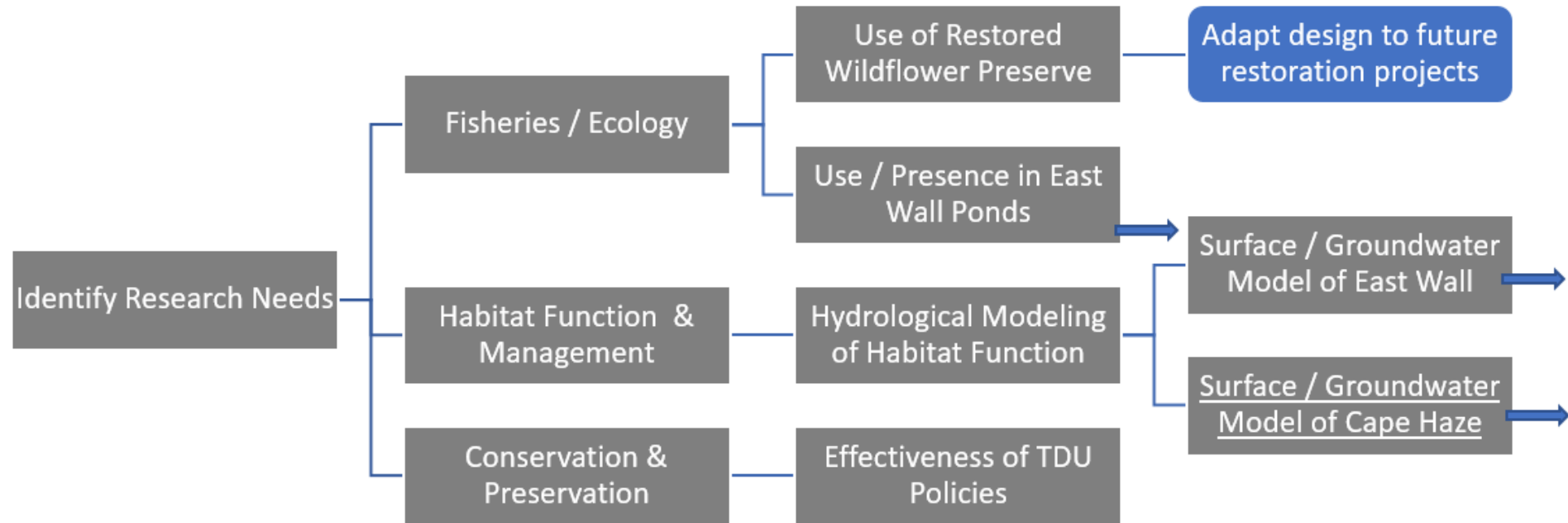
- ▶ Research Plan & Application Plan outputs

▶ Workshops

- ▶ 1. Kickoff & data gathering - Nov. 19, '21
- ▶ 2. Scoping of policy tools & research needs - Feb. 8, '22
 - ▶ Discussed Charlotte County development policies, land acquisition
- ▶ 3. **Research & Application planning - Mar. 23, '22**
 - ▶ Developing tools to guide research decisions and applications of findings to policy
- ▶ 4. Plan finalization - Aug. '22
 - ▶ Plans will feed into research funding opportunities & Comp Plan amendments

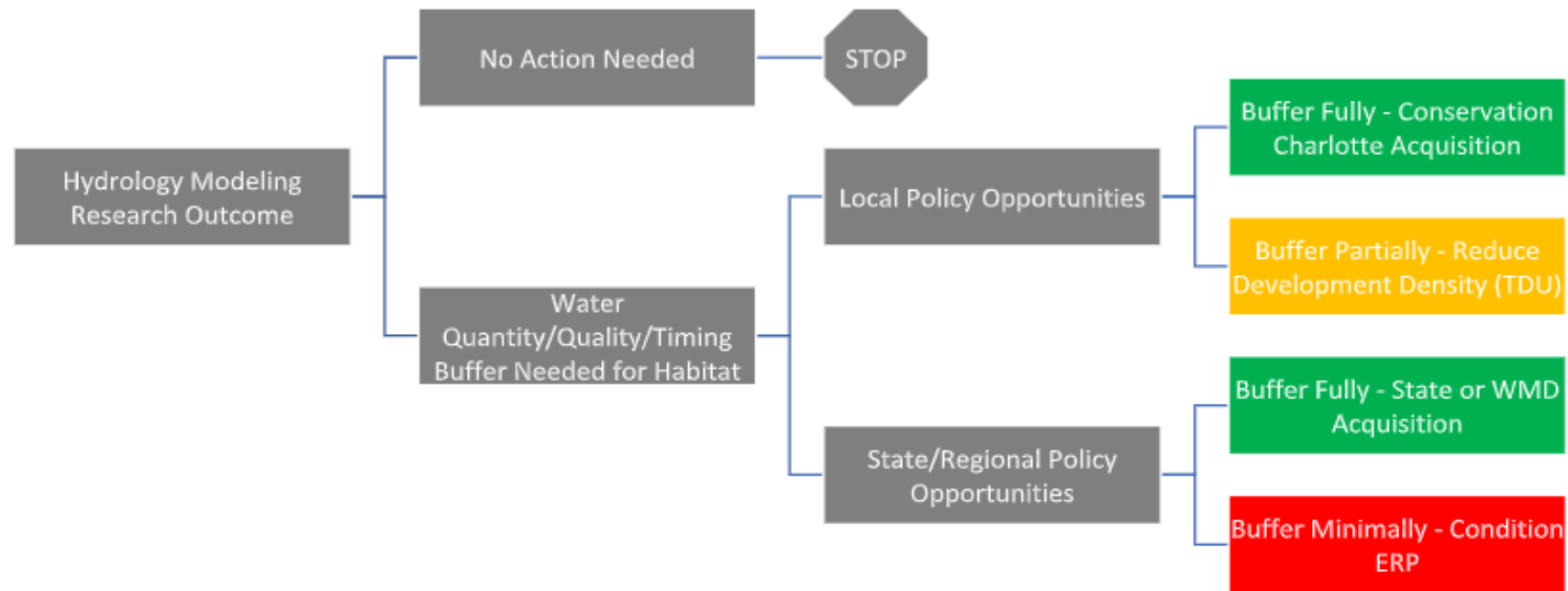
HCS project progress

DRAFT Research Needs - example decision tree



HCS project progress

DRAFT Applications of Research to Management Decision Uncertainties – **example decision tree**



Legend:

Topic or Process

Research Outcome

Policy Action Outcome

Contacts



▶ Nicole Iadevaia

- ▶ CHNEP Research & Outreach
- ▶ Niadevaia@chnep.org

▶ Corey Anderson (PI)

- ▶ FWC Habitat Conservation
- ▶ Corey.Anderson@myfwc.com

▶ Dave Blewett

- ▶ FWRI Fisheries Research
- ▶ David.Blewett@myfwc.com

▶ Phil Stevens

- ▶ FWRI Fish Biology Research
- ▶ Philip.Stevens@myfwc.com

▶ Kali Spurgin

- ▶ FWC Marine Fishery Management
- ▶ Kali.Spurgin@myfwc.com

▶ Shaun Cullinan

- ▶ Charlotte Co. Planning & Zoning
- ▶ Shaun.Cullinan@charlottecountyfl.gov