



CHARLOTTE COUNTY
ENVIRONMENTAL INITIATIVES



BIG WATERS
LAND TRUST



OUR MISSION

Protect the land and water in Southwest Florida for the benefit of people and nature.

- 501(c)(3) not-for-profit
- 17 employees serving 5+4 counties
Manatee, Sarasota, Charlotte, Lee, and Collier Counties, plus parts of Hillsborough, Hardee, DeSoto, and Glades Counties
- Accredited Land Trust
- 20,056 acres conserved
- 63 properties



OUR EVOLUTION



BIG WATERS
LAND TRUST

2003

Sarasota Conservation Foundation

2009

Conservation Foundation of the Gulf
Coast

2024

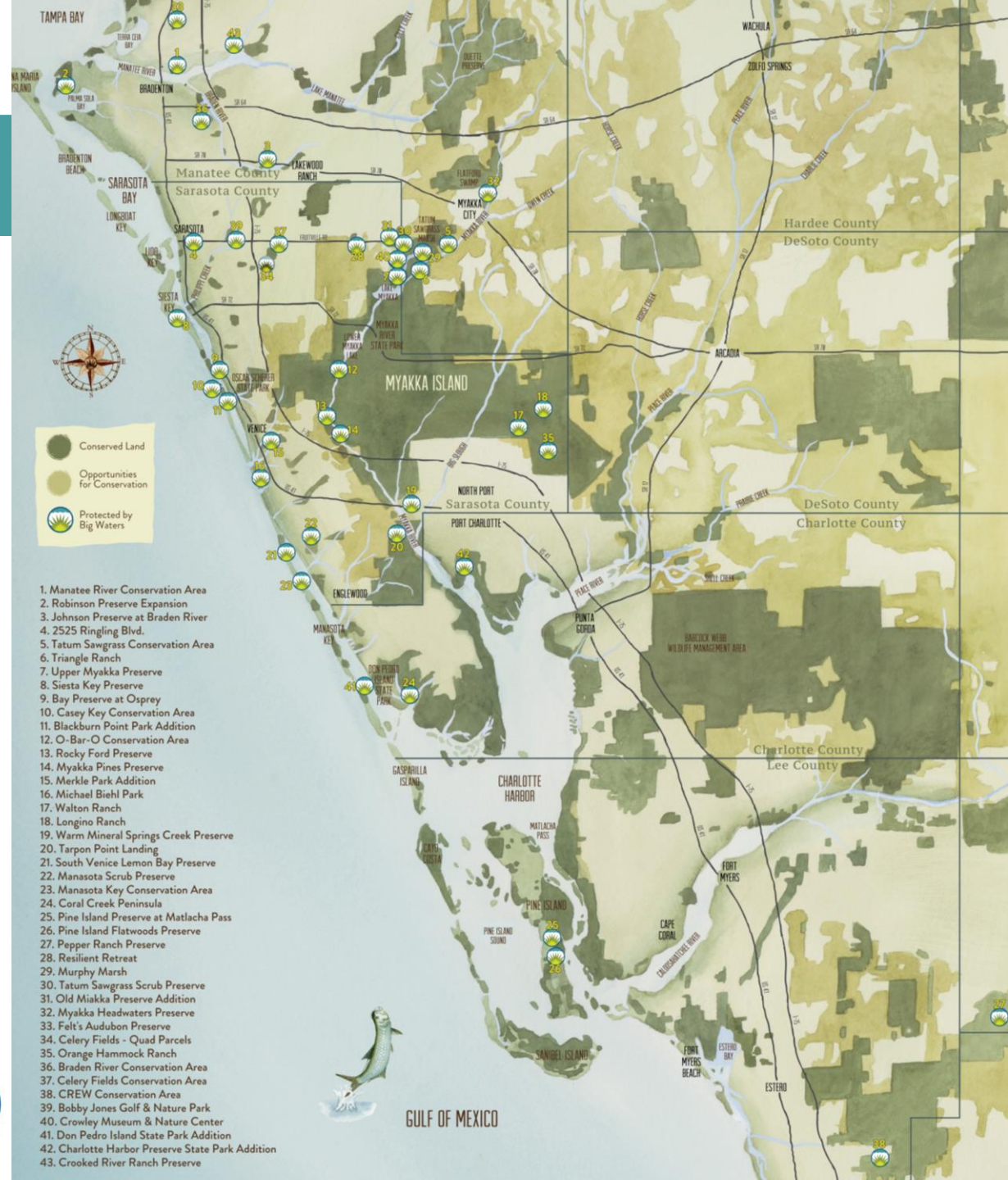
Big Waters Land Trust



WE SAVE LAND, FOREVER.

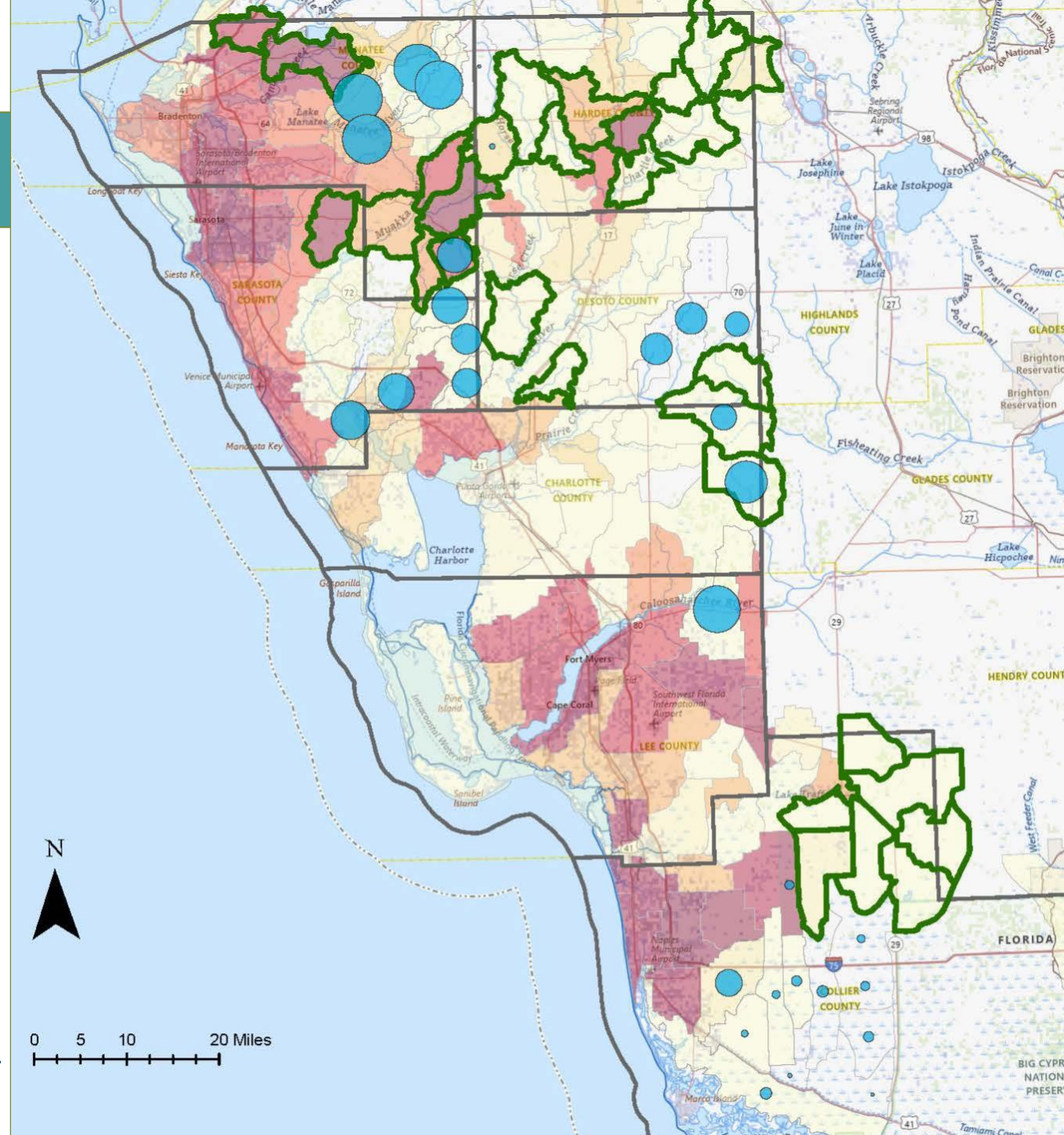
New Priorities

- Clean Water
- Imperiled Species
- Coastal Resiliency
- Sustainable Agriculture
- Access for All
- Carbon Sequestration



STRATEGIC CONSERVATION PLAN

- Conservation values
- Ecological and social science research
- Focused and strategic approach



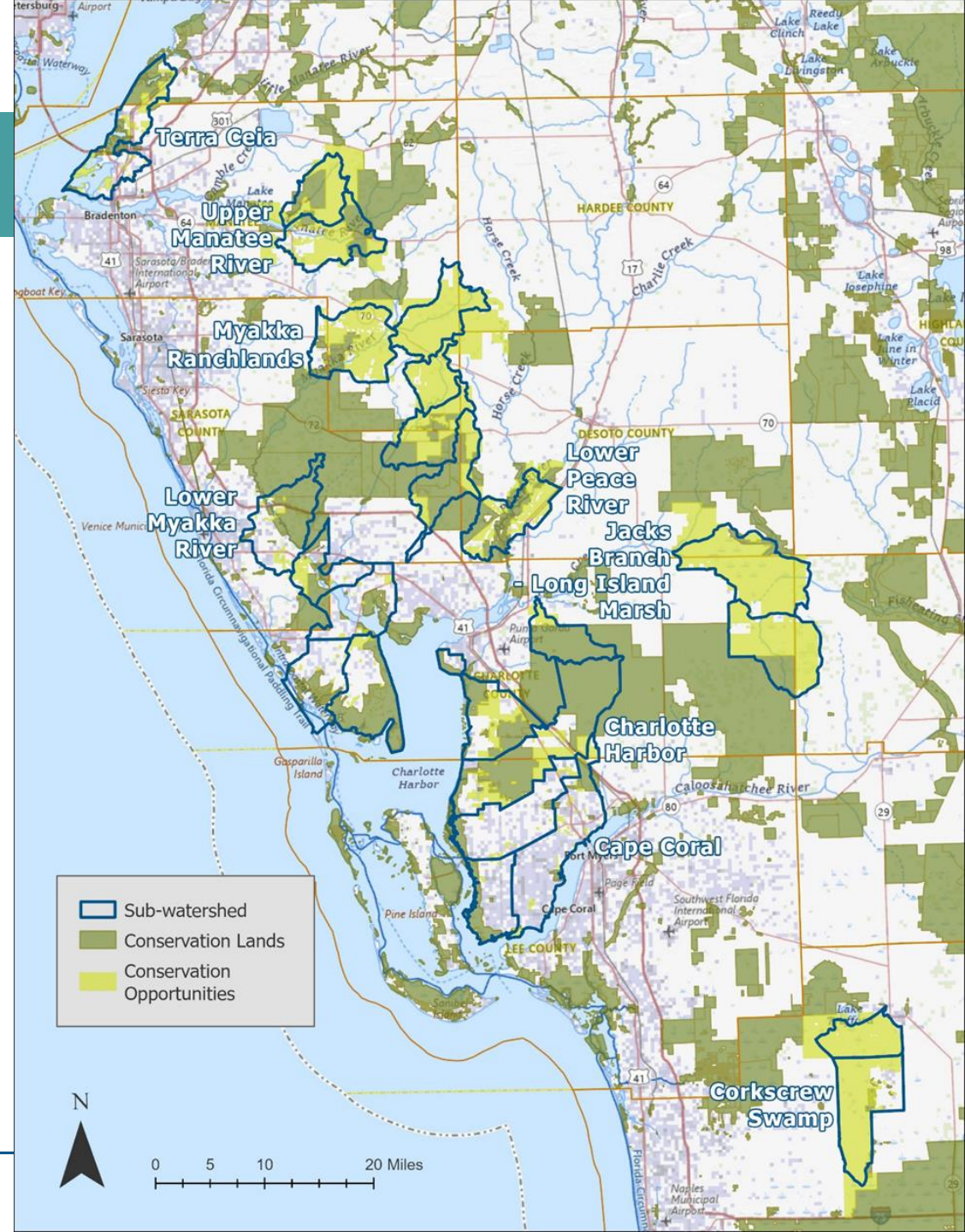
DATA DRIVEN PLANNING

- American Forest Tree Equity Score
- US Census
- County Demographic
- EPA Watershed Index
- Florida Natural Area Inventory
- US Forest Service Index of Drinking Water
- Trust for Public Land
- FL Dept of Ag Geodata for Agriculture

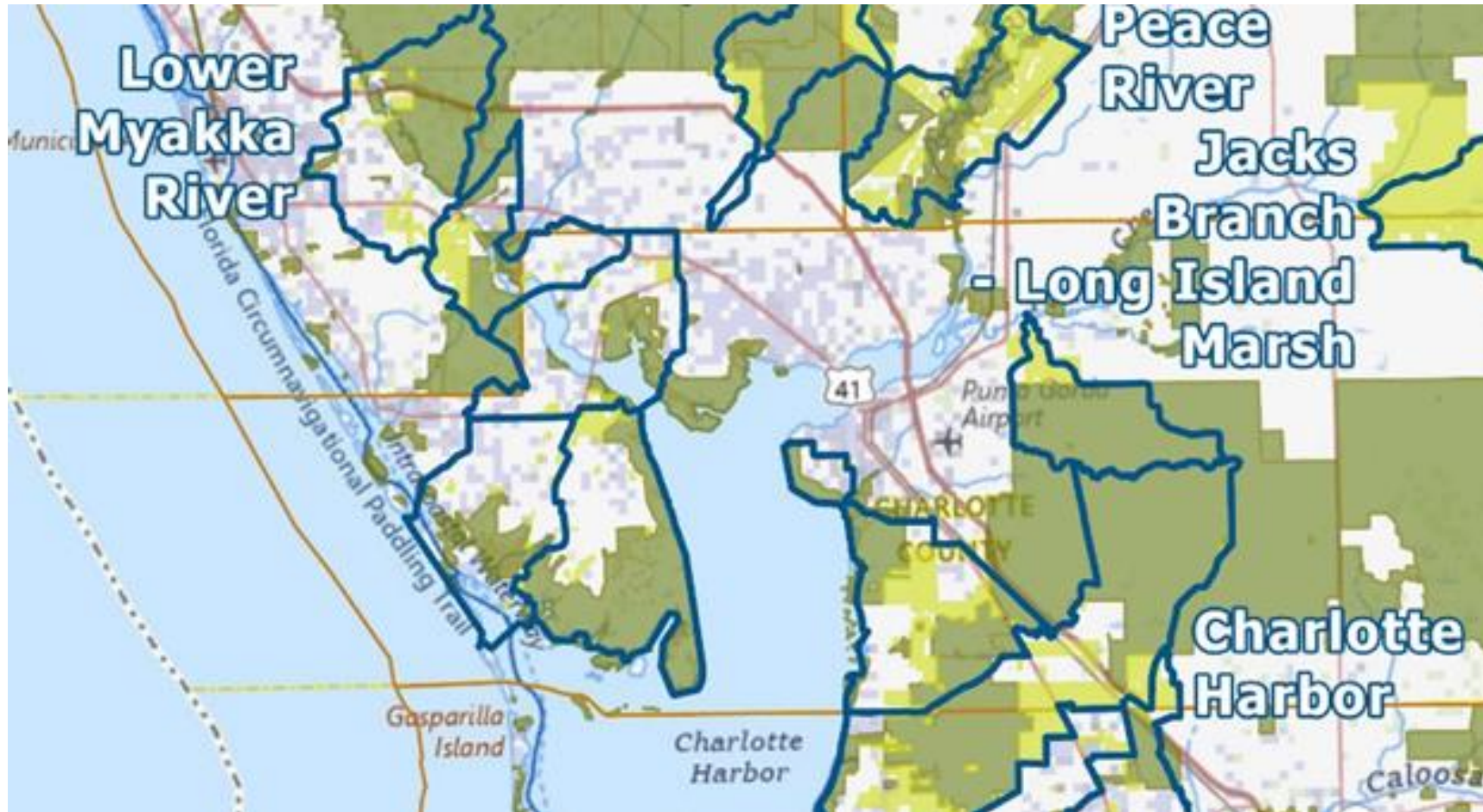


CONSERVATION FOCUS AREAS

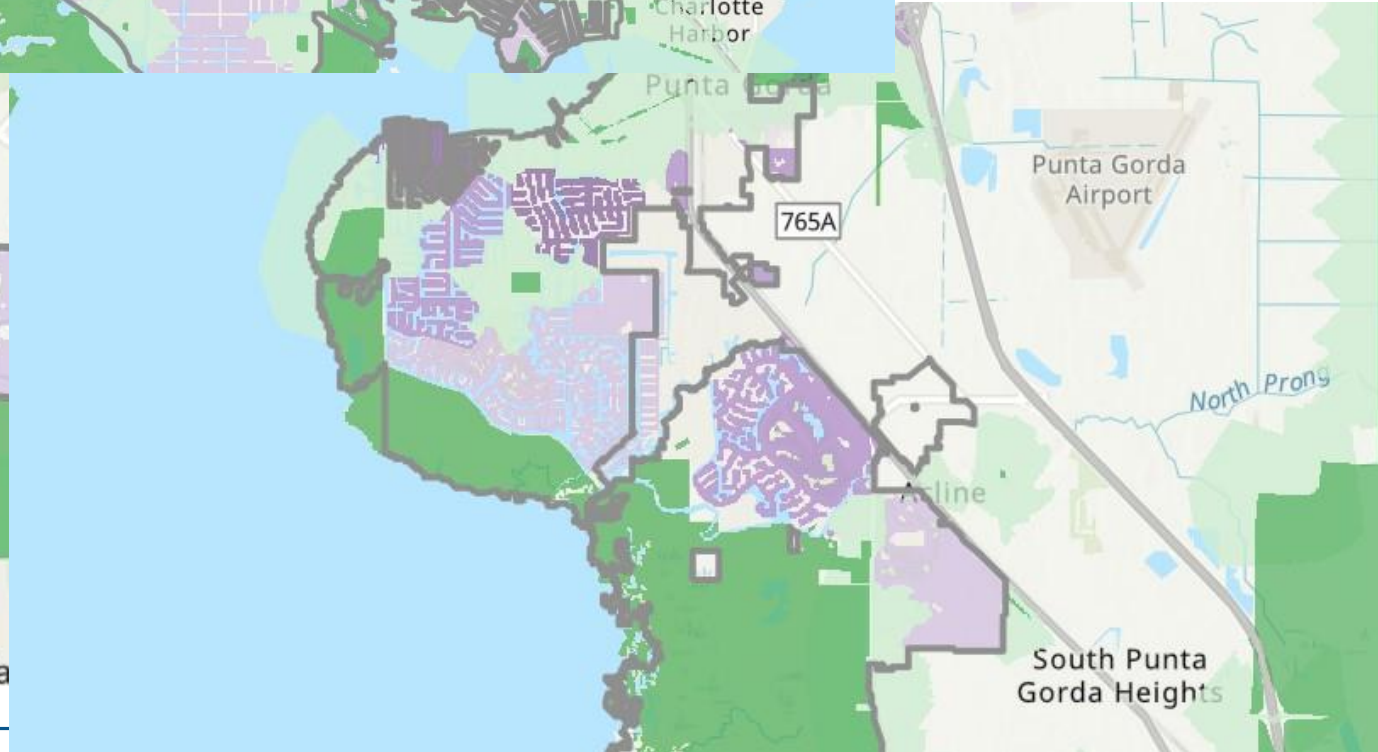
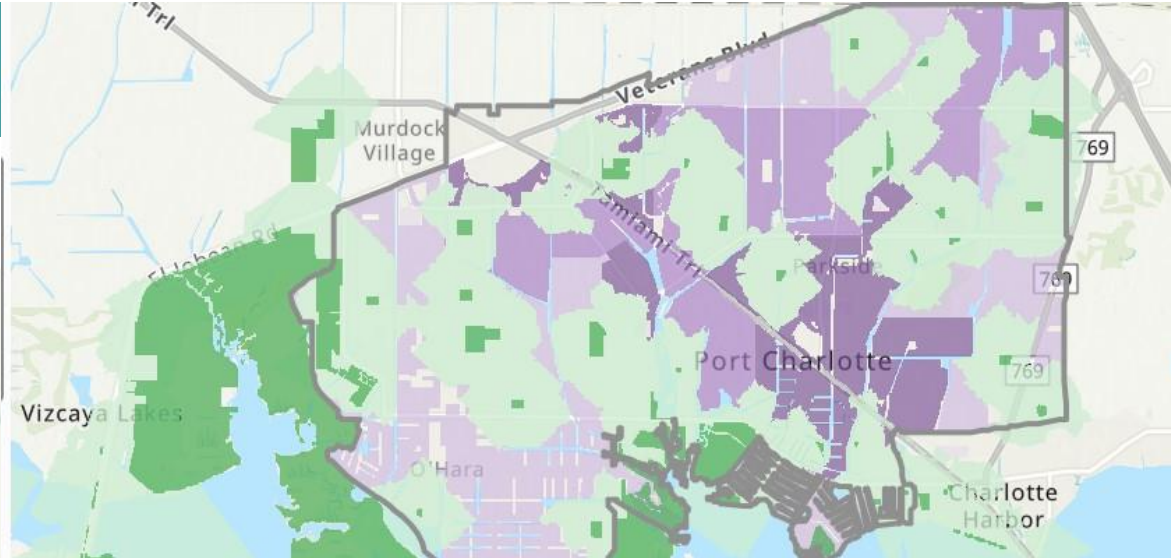
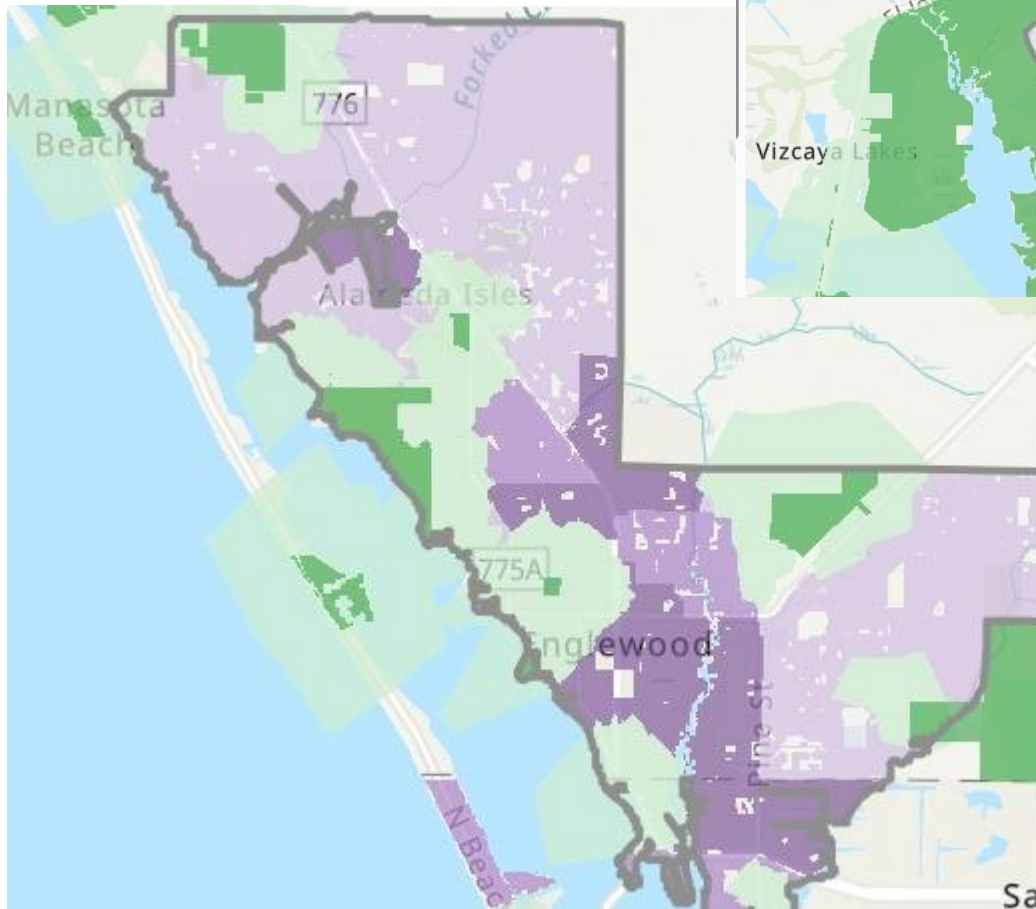
- SUB-WATERSHED
- CONSERVATION LANDS
- CONSERVATION OPPORTUNITIES



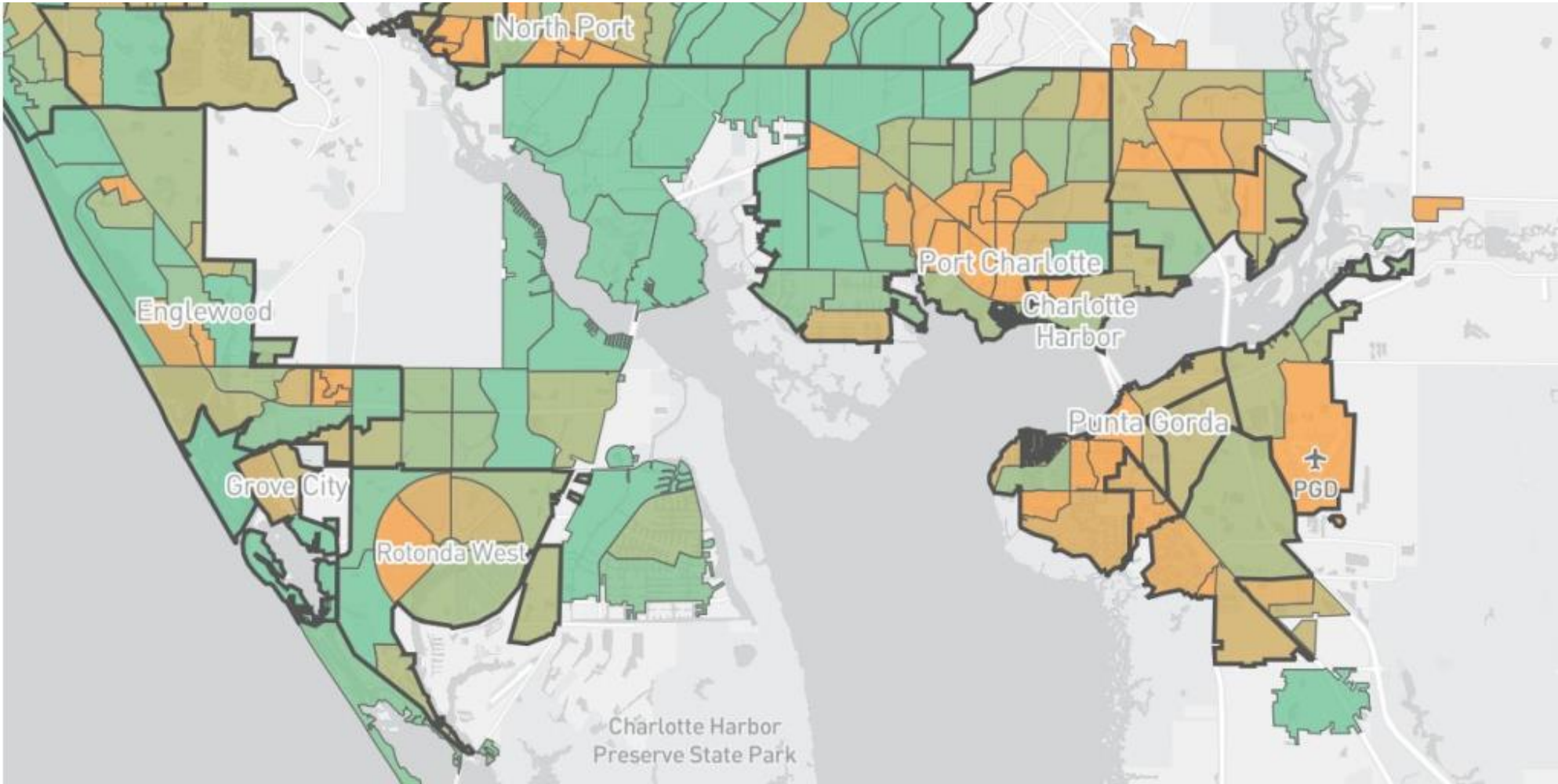
CHARLOTTE COUNTY PRIORITIES



PARK ACCESS



TREE COVER



EXTERNAL AND INTERNAL CONTENT

External (public)

- Executive Summary (background info)
- Conservation Values
- Goals and Metrics
- Focus Areas

Internal (proprietary)

- Landowner Analysis
- Partner Analysis
- Funding Analysis
- Programming Plan
- Fundraising Plan
- Marketing Plan
- Appendix 1 – GIS Methodology
- Appendix 2 – Helpful Regional Resources



CONSERVATION GOALS

Protect, enhance, and restore lands that

- Ensure clean drinking water supply
- Support native wildlife species and biodiversity
- Increase community resilience to natural disasters
- Practice sustainable agriculture
- Increase access for all to open spaces
- Store carbon naturally



VALUE

GOAL

METRICS

Imperiled
Species

Support native
wildlife species and
biodiversity

- ✓ Acres of habitat conserved
- ✓ Miles of corridor created
- ✓ Number of populations conserved, per target species
- ✓ Acres enhanced
- ✓ Number of trees planted



VALUE

GOAL

METRICS

Coastal Resiliency

Increase community resilience to natural disasters

- ✓ Acres conserved within high sea level rise risk focus areas
- ✓ Linear feet of shoreline conserved within high sea level rise risk focus areas



VALUE

GOAL

METRICS

Carbon
Sequestration

Store carbon
naturally

- ✓ Acres conserved in high carbon focus areas
- ✓ Metric tons of CO2 equivalent conserved (using published estimated values)
- ✓ Metric tons CO2 emissions avoided





[BIGWATERSLANDTRUST.ORG](https://bigwaterslandtrust.org)

© 2024 BIG WATERS LAND TRUST